

Agent's stamp

## HOW TO CONTACT US:

### Scarab Sweeper Limited

Pattenden Lane, Marden, Kent TN12 9QD

Parts department direct contact.

T:- +44(0) 1622 834500

E:- [partsdesk@scarab-sales.com](mailto:partsdesk@scarab-sales.com)

F:- +44(0) 1622 831492

W:- [scarab-sweepers.com](http://scarab-sweepers.com)

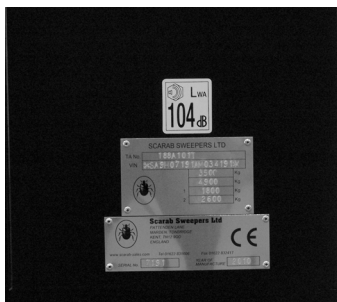
It is imperative that the correct model is FULLY identified when procuring replacement parts for your Scarab Sweeper. To avoid unnecessary confusion and delays caused by incorrectly ordered parts, please refer to the Vehicle Serial Number (CE) Plate and take note of the vehicle's number.



The Merlin/Magnum & XP Serial Number Plate is located on the left hand side of the subframe, on the rear face of the suction spigot mounting and inboard of the suction nozzle lifting ram.



The M6 Serial Number Plate is located on the left hand side of the subframe, below the hydraulic valve block cabinet.



The Minor Serial Number Plate is located on the right hand rear outside of the drivers cab



## GENERAL PARTS CATALOGUE

### Merlin, Magnum, XP, Minor, M6

When re-ordering this document please quote the following part number:

**Manual Z034904**

Issue: 3.0.0 ..... March 2014

*To download the latest copy of this catalogue, scan QR code the below or visit our website*



This manual is published by the Technical Publications Department of Scarab Sweepers Limited and every effort is made to ensure that the information it contains is correct at the time of publication. Due to a policy of continuous development, however, the Company reserves the right to alter the specification and to supply when so altered without reference to illustrations and descriptions in this manual.

# GENERAL PARTS CATALOGUE

## Warranty Statement

1. Scarab Sweepers Limited (hereinafter referred to as the Company) warrants that (subject to the other provisions of the published Terms and Conditions of Sale - available upon request) upon delivery and for a period of 12 months from the date of actual delivery, or 2,000 running hours from the date of actual delivery whichever is sooner, the Goods correspond with their specification at the time of delivery, and will be free from defects in materials and workmanship.
  2. The Company does not warrant the condition or quality of any used Goods supplied to the Customer, or other truck manufacturers' chassis cab content or to any other component not manufactured by the Company and any such warranty claims must be submitted to the manufacturer of that component, or their locally appointed agent.
  3. The Company shall not be liable for a breach of any of the warranties in condition 1 unless the Customer gives written notice of the defect to the Company, and (if the defect is as a result of damage in transit) to the carrier, within 7 days of the time when the Customer discovers or ought to have discovered the defect.
  4. The Company shall not be liable for a breach of any of the warranties in condition 1 if the Customer makes any further use of such Goods after giving such notice, the defect arises because the Customer failed to follow the Company's oral or written instructions as to the storage, installation, commissioning, use or maintenance of the Goods or (if there are none) good trade practice, or the Customer alters or repairs such Goods without the written consent of the Company, or uses non genuine parts to effect a repair.
  5. The following consumable items listed are excluded from the Company warranty:
    - all fuel oils,
    - antifreeze,
    - all brush link pivots and bushes,
    - wander hoses, suction nozzles,
    - body inlet ducts, wearing plates,
    - high pressure water pump piston seals and valves,
    - door seals,
    - inlet seals,
    - batteries,
    - tyres,
    - all brushes,
    - lift cables,
    - rubber skirts,
    - suction nozzle wheels,
    - flap trunking,
    - deflectors,
    - screens flaps or blanking plates,
    - water pump diaphragm valves and water jets,
    - all filter strainers and elements,
    - windows,
    - glass mirrors,
    - light bulbs,
    - fuses,
    - brake lining pads,
    - auxiliary drive belts and any other part normally regarded as consumable.
  6. Any parts replaced under the terms of this warranty will be covered by the unexpired portion of this warranty.
  7. Subject to conditions 3 and 4, if any of the Goods do not conform with any of the warranties in condition 1 the Company shall at its option repair or replace such Goods (or the defective part) or refund the price of such Goods at the pro rata Contract rate provided that, if the Company so requests, the Customer shall, at the Customer's expense, remove the defective Goods or part of such Goods and return the Goods or the part of such Goods which is defective to the Company. Parts replaced under warranty will be delivered by the Company FOB port of exportation.
  8. If the Company complies with the terms contained in this statement it shall have no further liability for a breach of any of the warranties in condition 1 in respect of such Goods.
  9. No representative or agent of Scarab Sweepers Limited has the authority to add or to vary these Warranty Conditions except with the Company's official confirmation in writing from Scarab Sweepers Limited, head office in Marden Kent, England.
- For further information, please refer to the Company's Terms & Conditions of Sale. In the event of conflict between this Warranty Statement and the Company's Terms & Conditions of Sale the latter will prevail.

# GENERAL PARTS CATALOGUE

## TABLE OF CONTENTS

Brushes .....	1
Side brush .....	3
Widesweep .....	6
Suction nozzle .....	8
Brakes & Suspension .....	12
Steering & Drive .....	13
Seals & Flaps .....	14
Filters .....	16
Water control .....	19
Pneumatics .....	23
Suction fan .....	25
Electrical .....	26
Cab & Hopper exterior .....	29

## SERVICE KITS

Mistral/M6 .....	31
First 250 Hours	
250 Hours	
2000 Hours	
Merlin/Magnum/XP .....	32
First 100 Hours	
1800 Hours	
Uni-Drive .....	32
First 100 Hours	
1800 Hours	
Minor Euro 5 .....	33
300 - 600 - 1500 Hours	
900 Hours	
1200 Hours	
1800 Hours	
Minor Euro 4 .....	34
300 Hours	
900 Hours	
1500 Hours	
1800 Hours	

## Section 1 -Brushes



MINOR

Part No 023469 - Front brush (Polypropylene) \* 84



MINOR

Part No 014537 - Front brush (Wire) \* 80



MERLIN/MAGNUM/MISTRAL/M6

Part No 023473 - Side brush - 3 stud (Wire) \* 75

Part No 021734 - Front brush - 3 stud (wire) \* 75



MERLIN/XP

Part No 023470 - Side brush - 4 stud (4 row wire) \* 75

Part No 031423 - Side brush - 4 stub (3 row wire) \* 75

Part No 030624 - Side brush - 4 stud (4 row wire mounted in two directions)



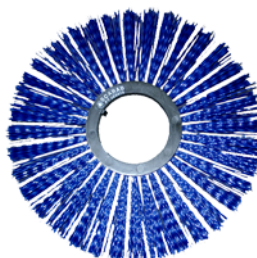
MERLIN/XP/MAGNUM/MISTRAL/M6/MINOR

Hard wearing

Part No 033787 - Widesweep brush fill - Ø320 \* 1296

MERLIN/XP/MAGNUM/MISTRAL/M6

Part No 035994 - Widesweep brush fill - Ø400 \* 1000



MERLIN/XP/MAGNUM/MISTRAL/M6/MINOR

Part No 023471 - Widesweep brush fill - Ø320 \* 1296

MERLIN/XP/MAGNUM/MISTRAL/M6

Part No 023474 - Widesweep brush fill - Ø400 \* 1000

**MINOR**

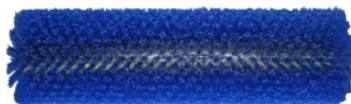
Part No 025883 - Front brush (Wire/polypropylene) \* 84

**MERLIN/XP**

Part No 022465 - Weed ripper brush - 4 stud \* 5

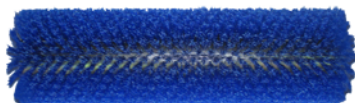
**MERLIN/MAGNUM/MISTRAL/M6**

Part No 020921 - Weed ripper brush - 3 stud \* 5

**MERLIN/XP/MAGNUM/MISTRAL/M6**

Part No 023168 - Widesweep brush assembled - Ø320  
Part No 023169 - Widesweep brush assembled - Ø400

\* Pallet quantities. These are competitively priced.

**MINOR**

Part No 023075 - Widesweep brush assembled - Single sweep  
Part No 024382 - Widesweep brush assembled - Dual sweep



## Section 2 -Side/Front Brush



MERLIN/XP/MISTRAL/MINOR

Part No 011688 - Side brush hub - 4 stud quick release

Part No 034123 - Side brush hub - 3 stud quick release



MERLIN/MAGNUM/MISTRAL/M6

Part No 014067 - Side brush hub



MINOR

Part No 024139 - Front brush hub



MERLIN/MAGNUM/XP/MISTRAL/M6

Part No 013011 - Top link



MERLIN/MAGNUM/XP/M6

Part No 010749 - Side brush motor



MERLIN/MAGNUM/XP/MISTRAL/M6

Part No - 041649 Kingpin kit





**MERLIN/XP/MISTRAL**  
Part No 041647 - King pin lug repair kit



**MINOR**  
Part No 024610 - Bottom link pin & bush kit



**MERLIN/MAGNUM/MISTRAL/M6**  
Part No 041648 - King pin lug repair kit



**MINOR**  
Part No 013487 - Top link



**MERLIN/MAGNUM/XP/MISTRAL/M6**  
Part No 024611 - Bottom link pin & bush kit



**MINOR**  
Part No 013486 - Front brush gas spring

**MINOR**

Part No 013662 - Side & front brush king post bush

**MINOR**

Part No 027114 - Side brush lift ram  
Part No 027116 - Front brush lift ram  
Part No 027118 - Side brush swing-out ram  
Part No 040350 - Front brush swing-out ram



MERLIN/MAGNUM/XP/MISTRAL/M6  
Part No 024539 - Side brush lift ram

**MINOR**

Part No 010006 - Side & front brush motor

## Section 3 -Widesweep



MERLIN/MAGNUM/XP/MISTRAL/M6  
Part No 024535 - Brush drive shaft  
MINOR  
Part No 013648 - Brush drive shaft



MERLIN/MAGNUM/XP/MISTRAL/M6  
Part No 023080 - Pivot shaft - tapered ends  
Part No 020728 - Pivot shaft - stepped straight ends - old style



MERLIN/MAGNUM/XP/MISTRAL/M6  
Part No 010566 - Drive motor  
MINOR  
Part No 010749 - Drive motor  
Part No 023503 \_ Drive motor (dual sweep)



MERLIN/MAGNUM/XP/MISTRAL/M6  
Part No 041650 - Slew bearing assembly (From 1999)



MINOR  
Part No 013652 - Drive tube  
Part No 023526 - Drive tube (dual sweep)



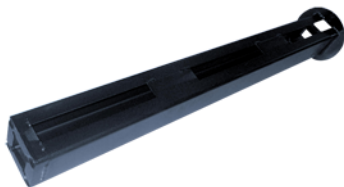
MERLIN/MAGNUM/XP/MISTRAL/M6  
Part No 010612 - Brush bearing



MERLIN/MAGNUM/XP/MISTRAL/M6  
Part No 036789 - spherical pivot bearing



MERLIN/MAGNUM/XP/MISTRAL/M6  
Part No 037172 - spherical bearing retainer



MERLIN/MAGNUM/XP/MISTRAL/M6  
Part No 013646 - Brush core  
Minor  
Part No 013647 - Brush core  
Part No 023528 - Brush core (dual sweep)



MERLIN/MAGNUM/XP/MISTRAL/M6  
Part No 024224 - Widesweep bearing assembly

## Section 4 -Suction



**MERLIN/MAGNUM/XP/MISTRAL/M6**  
Part No 020729 Plastic pivot bush



**MERLIN/MAGNUM/XP/MISTRAL/M6**  
Part No 041651 - Nozzle leash cable kit



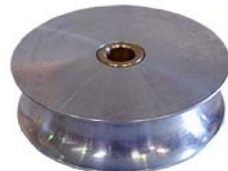
**MERLIN/MAGNUM/XP/MISTRAL/M6**  
Part No 031831 - Nozzle wheel



**MERLIN/MAGNUM/XP/MISTRAL/M6**  
Part No 027154 - Suction nozzle lift cable  
Old style lift on truck mount vehicles



**MERLIN/MAGNUM/XP/MISTRAL/M6**  
Part No 013277 - Nozzle skid plate



**MERLIN/MAGNUM/XP/MISTRAL/MINOR/M6**  
Part No 010709 - Pulley and bush  
Old style lift on truck mount models



MERLIN/MAGNUM/XP/MISTRAL/M6  
Part No 041653 - Blanking flap assembly LH  
Part No 041654 - Blanking flap assembly RH

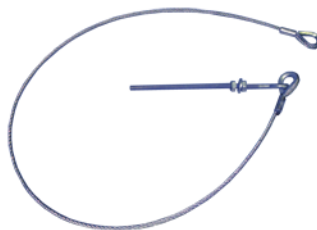


MERLIN/MAGNUM/XP/MISTRAL/M6  
Part No 013028 - Suction hose \*\*  
MINOR  
Part No 023154 - Suction hose

\*\* Other lengths available.



MERLIN/MAGNUM/XP/MISTRAL/M6  
Part No 041652 - Nozzle adjuster



MINOR  
Part No 031379 - Suction nozzle lift cable



MINOR  
Part No 032438 - Nozzle wheel



M6  
Part No 034367 - Deflector tube



**MERLIN/MAGNUM/XP/MISTRAL/M6**

Pneumatic tilt

Part No 023623 - Suction nozzle complete assembly LH

Part No 023624 - Suction nozzle complete assembly RH

Hydraulic tilt

Part No 020700 - Suction nozzle complete assembly LH

Part No 020730 - Suction nozzle complete assembly RH



**MINOR**

Part No 018207 - Suction nozzle complete assembly LH

Part No 023279 - Suction nozzle complete assembly RH



**MERLIN/MAGNUM/XP/MISTRAL/MINOR/M6**

Part No 010587 Wander hose tube end



**MERLIN/MAGNUM/XP/MISTRAL/M6**

Part No 010119 - Wander hose (door mounted)

Part No 025214 - Wander hose (rear boom)

Part No 035990 - Wander hose (overhead boom)

**MINOR**

Part No - 010119 - Wander hose



**MERLIN/MAGNUM/XP/MISTRAL/MINOR/M6**

Part No 040670 - Wander hose tube handle



**MINOR**

Part No 015033 - Wander hose complete assembly





**MERLIN/MAGNUM/XP/MISTRAL/M6**  
Part No 024668 - Filter screen  
Part No 031883 - Filter screen - Stainless steel



**MINOR**  
Part No 025261 - Filter screen  
Part No 025668 - Filter screen - Fine mesh  
Part No 032292 - Filter screen - Stainless steel



**MERLIN/MAGNUM/XP/MISTRAL**  
Part No 025435 - Deflector tube



**MINOR**  
Part No 025529 - Inlet tube



**MERLIN/MAGNUM/XP/MISTRAL/M6**  
Part No 022644 - Deflector



**MINOR**  
Part No 014303 - Suction tube



MINOR

Part No 027115 - Suction nozzle tilt ram



MINOR

Part No 027119 - Suction nozzle lift ram

## Section 5 -Brakes &amp; Suspension



MINOR

Part No 020120 - Rear brake shoes



MINOR

Part No 020127 - Rear brake cylinder LH  
Part No 020128 - Rear brake cylinder RH

MINOR

Part No - 020138 - Front brake pads



MINOR

Part No 014594 - Front brake disc



MINOR

Part No 040037 - Rear Leaf spring bush (front)  
Part No 040038 - Rear leaf spring bush (rear)  
Part No 037221 - Front leaf spring bush

## Section 6 -Steering &amp; Drive



MINOR  
Part No 021842 - Kingpin repair kit 1.8T



MINOR  
Part No 041656 - Kingpin repair kit 2T



MINOR  
Part No 020109 - Prop-shaft UJ



MERLIN/MAGNUM/XP  
Part No 014935 - Prop-shaft UJ  
Hydrostatic & Reduction Gearbox Only

## Section 7 -Seals &amp; Flaps



**MERLIN/MAGNUM/XP/MISTRAL/MINOR**  
**Part No 013601 - Spigot seal**  
**M6**  
**Part No 039140 - Spigot seal**



**MERLIN/MAGNUM/XP/MISTRAL/M6/MINOR**  
**Part No 013599 - Side/rear hatch seal**  
**MINOR**  
**Part No 013594 - Suction tube front aperture**



**MERLIN/MAGNUM/XP/MISTRAL**  
**Part No 030481 - Rear door seal**



**MINOR**  
**Part No 010544 - rear door seal**



**MERLIN/MAGNUM/XP/MISTRAL**  
**Part No 012216 - Brush skirt (heavy duty)**  
**Part No 040710 - Brush skirt (beige)**



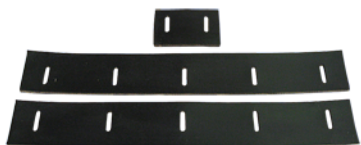
**MERLIN/MAGNUM/XP/MISTRAL/MINOR/M6**  
**Part No 010247 - Brush & Suction skirt (heavy duty)**  
**Part No 040709 - Brush & Suction skirt (beige)**



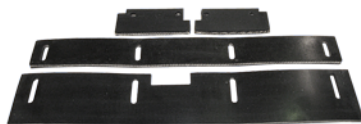
**MERLIN/MAGNUM/XP/MISTRAL/M6**  
Part No 022516 - Widesweep skirt (heavy duty)  
Part No 040711 - Widesweep skirt (black)



**MINOR**  
Part No 022652 - Widesweep skirt  
Part No 031249 - Widesweep skirt (dual sweep)



**MERLIN/MAGNUM/XP/MISTRAL/M6**  
Part No 024550 - Suction nozzle flap set



**MINOR**  
Part No 011593 - Suction nozzle flap set

## Section 8 - Filters



**MERLIN/MAGNUM/XP/MISTRAL/M6**  
Part No 013124 - Hydraulic suction filter (chassis)



**MERLIN/MAGNUM/XP/MISTRAL/MINOR/M6**  
Part No 025104 - High pressure hydraulic filter



**MERLIN/MAGNUM/XP/MISTRAL/M6**  
Part No 013125 - Return filter (hydraulic tank)  
**MINOR**  
Part no 011972 - Return filter (hydraulic tank)



**MINOR**  
Part No 021038 - Hydraulic Suction filter (chassis)



**MERLIN/MAGNUM/XP/MISTRAL/MINOR/M6**  
Part No 020687 - Suction filter (hydraulic tank)



**MISTRAL/M6**  
Part No 025280 - Main air filter  
**MINOR**  
Part No 025280 - Main air filter (Euro 4)





**MISTRAL/M6**  
Part No 025281 - Safety air filter  
**MINOR**  
Part No 025281 - Safety air filter (Euro 4)



**MISTRAL/M6**  
Part No 036195 - Pre-fuel filter (Cummins engine)



**MISTRAL/M6**  
Part No 034960 - Fuel filter  
**MINOR**  
Part No 033453 - Fuel filter (Euro 4)  
Part No 037930 - Fuel Filter (Euro 5)



**MINOR**  
Part No 037934 - Air filter indicator (Euro 5)



**MISTRAL/M6**  
Part No 034959 - Oil filter (Cummins Engine)  
**MINOR**  
Part No - 033452 - Oil filter (Euro 4)  
Part No 037929 - Oil filter (Euro 5)



**MINOR**  
Part No 037931 - Safety air filter (Euro 5)



**MINOR**  
Part No 037932 - Main air filter (Euro 5)



**MINOR**  
Part No 036246 - Filter sock DPF



**MERLIN/MAGNUM/MISTRAL**  
Part No 032461 - Steel water tank strainer



**MINOR**  
Part No 021223- Water strainer



**MERLIN/MAGNUM/XP/MISTRAL/M6**  
Part No 041657 - Water strainer



**MISTRAL/M6**  
Part No 034961 - Drive belt (Cummins engine)  
**MINOR**  
Part No 033521 - Drive belt (Euro 4 & 5-VM engine)

## Section 9 -Water control



MERLIN/MAGNUM/XP/MISTRAL/M6

Part No - 041658 - Twin Diaphragm water pump repair kit (1)



MERLIN/MAGNUM/XP/MISTRAL/M6

Part No - 041659 - Twin Diaphragm water pump repair kit (2)



MINOR

Part No 026866 - Electric water pump



MERLIN/MAGNUM/XP/MISTRAL/M6

Part No 010101 - Water release valve



MERLIN/MAGNUM/XP/MISTRAL/M6/MINOR

Part No 011743 - Ball valve - 1/4" BSP

Part No 013757 - Ball valve - 3/4" BSP



MERLIN/MAGNUM/XP/MISTRAL/M6

Part No 023862 - Water filter complete



**MERLIN/MAGNUM/XP/MISTRAL/M6**  
Part No 012883 - Sacrificial anode - Steel water tanks only



**MERLIN/MAGNUM/XP/MISTRAL/MINOR/M6**  
Part No 022739 - Dump valve (30 litre pump)



**MERLIN/MAGNUM/XP/MISTRAL/M6**  
Part No 010599 - Dump valve (42 litre pump)



**MERLIN/MAGNUM/XP/MISTRAL/MINOR/M^**  
Part No 010748 - Hand lance



**MINOR**  
Part No 030597 - Water filter complete LP pump  
Part No 025290 - Water filter complete HP pump



**MINOR**  
Part No 014454 - HP pump drive belt



**MERLIN/MAGNUM/XP/MISTRAL/MINOR/M6**  
Part No 024230 - Hose reel swivel elbow kit



**MERLIN/MAGNUM/XP/MISTRAL/M6**  
Part No 037894 - Roller pump repair kit



**MERLIN/MAGNUM/XP/MISTRAL/MINOR/M6**  
Part No 025238 - Hose feed roller kit



**M6**  
Part No 040046 - Electric water pump



**MERLIN/MAGNUM/XP/MISTRAL/MINOR/M6**  
Part No 026217 - Hose clamp stop



**MERLIN/MAGNUM/XP/MISTRAL/M6**  
Part No 037969 - Water valve complete - Deutsch plug  
Part No 034625 - Water valve complete - Hirshmann plug  
**MINOR**  
Part No 034627 - Water valve complete- Hirshmann plug



**MERLIN/MAGNUM/XP/MISTRAL**  
Part No 030744 - Water valve repair kit



**MERLIN/MAGNUM/XP/MISTRAL/MINOR/M6**  
Part No 034624 - Water valve seal kit



**MERLIN/MAGNUM/XP/MISTRAL**  
Part No 024832 - water valve  
**MINOR**  
Part No 025353 - Water valve



**MERLIN/MAGNUM/XP/MISTRAL**  
Part No 030740 - water valve  
**MINOR**  
Part No 030739 - Water valve



**MERLIN/MAGNUM/XP/MISTRAL/M6**  
Part No 036044 - Side brush water jet assembly



**MINOR**  
Part No 030747 -Side/front brush water jet assembly



MERLIN/MAGNUM/XP/MISTRAL/MINOR/M6  
Part No 030748 - Spray jet (blue)  
Part No 030632 - Spray jet (green)  
Minor  
Part No 030635 - Spray jet (red)



MERLIN/MAGNUM/XP/MISTRAL/MINOR/M6  
Part No 030506 - Spray jet assembly (high pressure)  
Part No 030507 - Spray jet assembly (low pressure)



MERLIN/MAGNUM/XP/MISTRAL/MINOR/M6  
Part No 030633 - Jet filter



MERLIN/MAGNUM/XP/MISTRAL/MINOR/M6  
Part No 030746 - Spray jet cap



MERLIN/MAGNUM/XP/MISTRAL/MINOR/M6  
Part No 030636 - Filter seal



MERLIN/MAGNUM/XP/MISTRAL/MINOR/M6  
Part No 013360 - Square spray jet assembly



## Section 10 -Pneumatics



**MERLIN/MAGNUM/XP/MISTRAL/M6**  
 Part No 035673 - Air valve - Single  
 Part No 035674 - Air valve - Double



**MERLIN/MAGNUM/XP/MISTRAL/M6**  
 Part No 031330 - Nozzle lift cylinder assembly



**MERLIN/MAGNUM/XP/MISTRAL/M6**  
 Part No 032119 - Nozzle tilt cylinder assembly



**M6**  
 Part No 041665 - Widesweep swivel cylinder assembly



**MERLIN/MAGNUM/XP/MISTRAL**  
 Part No 026063 - Air valve - Single  
 Part No 026064 - Air valve - Double



**MERLIN/MAGNUM/XP/MISTRAL/M6**  
 Part No 023370 - Side brush pressure cylinder assembly



**MERLIN/MAGNUM/XP/MISTRAL/M6**  
**Part No 041666 - Widesweep lift cylinder assembly**



**MERLIN/MAGNUM/XP/MISTRAL/M6**  
**Part No 022587 -Side brush swing out cylinder assembly**

**Section 11 -Suction fan**

**MERLIN/MAGNUM/XP/MISTRAL/Minor/M6**  
Part No 041660 - Inlet cone  
Part No 041661 - Inlet cone - Stainless steel



**MERLIN/MAGNUM/XP/MISTRAL/M6**  
Part No 025241 - Impellor  
Part No 030651 - Impellor - Stainless steel  
**MINOR**  
Part No 025240 - Impellor  
Part No 032356 - Impellor - Stainless steel



**MERLIN/MAGNUM/XP/MISTRAL/MINOR/M6**  
Part No 024641 - Suction fan motor



**MERLIN/MAGNUM/XP/MISTRAL/MINOR/M6**  
Part No 013514 - Fan scraper

## Section 12 -Electrical

**MERLIN/MAGNUM/XP/MISTRAL/M6**

Part No 036921 - Coil 24v - 19w

Part No 036922 - Coil 24v - 22w

Part No 036934 - Coil 24v - 14w

Part No 038987 - Coil 24v - 21w

Part No 037059 - Coil 24v - 8w

**MERLIN/MAGNUM/XP/MISTRAL/M6**

Part No 034970 - Coil 24v - 19w

Part No 034983 - Coil 24v - 14w

Part No 034995 - Coil 24v - 22w

**MERLIN/MAGNUM/XP/MISTRAL**

Part No 034986 - Coil 24v - 14w with flying lead

**M6**

Part No 038233 - Coil 24v - 30w

**MINOR**

Part No 041224 - Coil 12v - 20.5w

Part No 041225 - Coil 12v - 17.2w

**MINOR**

Part No 041234 - Coil 12v - 17.2w with flying lead

Part No 041235 - Coil 12v - 20.5w with flying lead

**M6**

Part No 039746 - Coil 24v (rera door/hopper lift)

**MINOR**

Part No 004208 - Coil 12v - 18w  
 Part No 014655 - Coil 12v - 14w  
 Part No 021753 - Coil 12v - 19w  
 Part No 021768 - Coil 12v - 28w  
 Part No 034626 - Coil 12v - 8w

**MINOR**

Part No 038678 - Reversing light

**MINOR**

Part No 038560 - Rear light cluster LH  
 Part No 038678 - Rear light cluster RH

**MINOR**

Part No 030668 - Rear light cluster LH  
 Part No 030669 - Rear light cluster RH

**MINOR**

Part No 034847 - Main beam/side light unit



**MINOR**  
Part No 034848 - Dipped beam unit



**MINOR**  
Part No 034850 - Front directional indicator unit



**MERLIN/MAGNUM/XP/MISTRAL/M6**  
Part No 014064 - Beacon 24v  
**MINOR**  
Part no 010304 - Beacon 12v



**MERLIN/MAGNUM/XP/MISTRAL/MINOR/M6**  
Part No 032721 - LED beacon

## Section 13 -Cab &amp; Hopper exterior



MINOR  
Part No 035205 - Wiper balde



MINOR  
Part No 033107 - Door mirror  
Part No 041044 - Door mirror glass



MINOR  
Part No 013941 - Brush mirror  
Part No 041043- Brush mirror glass



MINOR  
Part No 020521 - Rear door gas spring

## SERVICE KITS



## Section 1 -Mistral/M6

Part Number 034962



**First 250 Hours**  
 Oil filter (engine)  
 Fuel filter  
 Fuel pre-filter  
 Air cleaner main element  
 Return filter element (hydraulic tank)  
 High pressure filter element (hydraulic system)

Part Number 034963



**250 Hours**  
 Oil filter (engine)  
 Fuel filter  
 Fuel pre-filter  
 Air cleaner main element

Part Number 034964



**2000 Hours**  
 Oil filter (engine)  
 Fuel filter  
 Fuel pre-filter  
 Air cleaner main element  
 Air cleaner safety element  
 Drive belt (engine)  
 Return filter element (hydraulic tank)  
 Suction filter element (hydraulic tank)  
 \* High pressure filter element (hydraulic system)  
 Hydraulic tank breather

\* An extra filter is required on machines fitted with 2 gear pumps.

## Section 2 -Merlin/Magnum/XP - hydrostatic drive

Part Number 030352



**First 100 Hours**  
Return filter element (hydraulic tank)  
Suction filter (hydraulic tank)

Part Number 030353



**1800 Hours**  
Return filter element (hydraulic tank)  
Suction filter (hydraulic tank)  
\* High pressure filter element (hydraulic system)  
Hydraulic suction filter (sub-frame)  
Hydraulic tank/hydrostatic gearbox breather x2

## Section 3 -Merlin/Magnum/XP - Unidrive

Part Number 030357



**First 100 Hours**  
Return filter element (hydraulic tank)

Part Number 030358



**1800 Hours**  
Return filter element (hydraulic tank)  
Suction filter (hydraulic tank)  
High pressure filter element (hydraulic system)  
Hydraulic tank breather

\* An extra filter is required on machines fitted with 2 gear pumps.

## Section 4 -Minor Euro 5

Part Number 040658



**300 - 600 - 1500 Hours**  
 Oil filter (engine)  
 Fuel filter (engine)  
 Main air filter (engine)

Part Number 040660



**900 Hours**  
 Oil filter (engine)  
 Fuel filter (engine)  
 Main air filter (engine)  
 Air filter indicator  
 Drive belt (engine)

Part Number 040659



**1200 Hours**  
 Oil filter (engine)  
 Fuel filter (engine)  
 Main air filter (engine)  
 Safety air filter (engine)

Part Number 040661



**1800 Hours**  
 Oil filter (engine)  
 Fuel filter (engine)  
 Main air filter (engine)  
 Air filter indicator (engine)  
 Drive belt (engine)  
 Suction filter element (hydraulic tank)  
 Return filter element (hydraulic tank)  
 Hydraulic suction filter (chassis)

## Section 5 -Minor Euro 4

Part Number 033789



**300 Hours**  
 Oil filter (engine)  
 Fuel filter (engine)  
 Main air filter (engine)

Part Number 033790



**900 Hours**  
 Oil filter (engine)  
 Fuel filter (engine)  
 Main air filter (engine)  
 Drive belt (engine)

Part Number 036627



**1500 Hours**  
 Oil filter (engine)  
 Fuel filter (engine)  
 Main air filter (engine)  
 DPF sock

Part Number 033791



**1800 Hours**  
 Oil filter (engine)  
 Fuel filter (engine)  
 Main air filter (engine)  
 Drive belt (engine)  
 Return filter element (hydraulic tank)  
 Suction filter element (hydraulic tank)  
 Suction filter element (chassis)

## GENERAL PARTS CATALOGUE

**NOTES:**

[illegible]

## GENERAL PARTS CATALOGUE

**NOTES:**

This image shows a blank sheet of white paper with horizontal ruling lines. A large, light gray diamond shape is centered on the page, extending from near the top edge to near the bottom edge. The diamond's vertices are positioned towards the left and right margins. The ruling lines are evenly spaced and run horizontally across the entire page, passing through the diamond. There are no markings, text, or other graphics on the paper.

**SPARE PARTS**  
01622- 834500

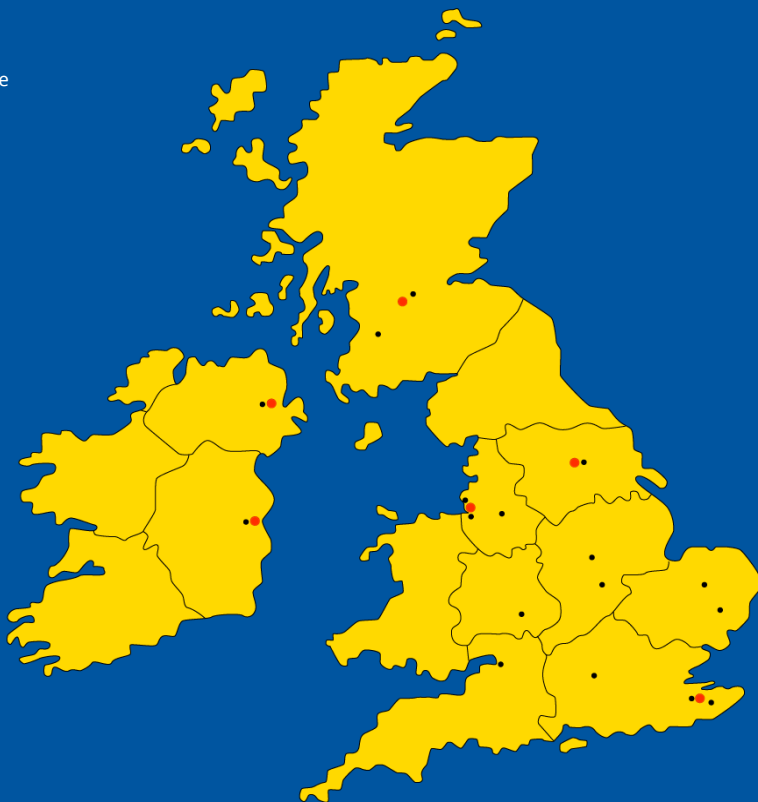
**SERVICE DESK**  
01622- 834501

**TRAINING**  
01622- 831006

**TECHNICAL HOTLINE**  
01622-831006  
01622-834505



- Mobile Service Engineer
- Distribution & Service Centre



SCARAB SWEEPERS LIMITED  
Pattenden lane, Marden  
KENT - TN12 9QD - United Kingdom

T : +44 (0) 1622 831006  
F : +44 (0) 1622 832417  
E : [scarab@scarab-sales.com](mailto:scarab@scarab-sales.com)  
[www.scarab-sweepers.com](http://www.scarab-sweepers.com)